

WHERE CAN YOU GO WHEN YOUR FAMILY PHYSICIAN IS NOT AVAILABLE?

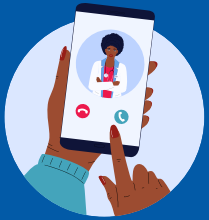
If this is a medical emergency, please go to your nearest emergency department, or call 9-1-1.

Community health services available to residents in the York and North Durham Regions of Ontario



Holiday hours may differ. Please check each service's website for up to date hours of operation.

VIRTUAL CARE



Central Region Virtual Urgent Care Clinic

Provider: Nurse Practitioners
Age: 6 months+
Where: Virtual
Hours: 7 days a week, 1:00pm - 9:00pm

BOOK NOW >>

IN-PERSON CARE - PAEDIATRICS

Children's Rapid Access

Operating in partnership with Oak Valley Health
Provider: Nurse Practitioners
Age: 6 months+
Where: 5402 Main St., Unit 5, Stouffville, ON
Hours: Mon - Fri 9:00am - 4:00pm

BOOK NOW >>



IN-PERSON CARE - ADULTS



Community Health Clinic - Adult Services

Provider: Nurse Practitioners
Age: 18 years+
Where: 5402 Main St., Unit 5, Stouffville, ON
Hours: Mon - Fri 9:00am - 4:00pm

BOOK NOW >>

URGENT MENTAL HEALTH SUPPORT SERVICES

9-8-8

Suicide Crisis Helpline
Hours: 24 hours 7 days a week

Call 988

988.ca/

9-8-8

Kids Help Phone

Mental health and crisis support for young people
Hours: 24 hours 7 days a week



Text 686868 or Call 1-800-668-6868



kidshelpphone.ca



OTHER HEALTH CARE NEEDS

Ontario Health811

New tool to call or chat online with a registered nurse and find the health care services and information

Age: All ages
Hours: 24/7

Call 811

<https://health811.ontario.ca>

Centralhealthline.ca

Central Health Line

Age: All ages
Hours: 24/7



www.centralhealthline.ca



iamsick.ca

View information about local clinics & pharmacies

Hours: 24/7



iamsick.ca

VACCINATIONS

York Region Vaccination Clinics

For vaccination clinics operated by York Region, or more information about vaccination, please visit york.ca or click Learn More.



LEARN MORE >>

PHARMACY



Pharmacists are able to treat and prescribe medications for a number of minor ailments.

Talk to your pharmacist to find out more.

COMMUNITY & SOCIAL SERVICES

2-1-1

Connects people to health, social services and community programs across the province.



<https://211ontario.ca>



Call or Text 211

211

BE WINTER READY

